



KONICA MINOLTA



CORPORATE BUSINESS SOLUTIONS
(CANADA) INC.
cibs

bizhub 367/287/227

A3



367	BW	36 PPM
287	BW	28 PPM
227	BW	22 PPM

Giving Shape to Ideas

Monochrome MFP with advanced functions is able to respond your workstyles



The simplicity and usability to fit in any working environment

New 7 inch operation panel

The new 7 inch operation panel provides industry top class multi-touch sensitivity, user friendly interface and intuitive operability. 4 hard menu keys at the bottom of the panel and the on-screen soft menu keys can allow user to register up to 9 commonly used functions such as copy, scan/fax, preview or soft numeric keypad.



Hard registration keys
Register up to 4 commonly used function.

Soft menu keys
Register up to 5 commonly used function.

Soft menu keys will appear by tapping on the screen tab.

Widgets function

Text boxes, icons, or GIF animations can be posted on the MFP operation panel like the sticky notes. These can be used to display office communications, MFP usage rules, or warnings.



Lighter and compact MFP body

The newly developed MFP main body offers compact and lightweight body than its predecessor, the bizhub 283/223. The MFP is able to fit almost in any type of working space.

The product design

The bizhub 367 series adopts the easy and intuitive INFO-Palette design and smart user interface. To ensure, to always provide the same user experience in any business situation through the seamless operation no matter from the PCs, tablets or smartphones.



Print from anywhere, anytime with the most advanced wireless, mobile and cloud technology

To connect with Android devices

The new Mobile Touch Area on the operation panel is ready to support NFC (Near Field Communication) connection with Android*1 devices. Touch the area with Android device to perform pairing through the PageScope Mobile (PSM). Select files on the PSM, then touch the device to the operation panel to perform print*2 or touch the device to the operation panel to perform scan*2.



*1 NFC connection requires Android OS 4.4 or higher to be installed.

*2 Wireless LAN environment is required to perform touch to print and scan.

To connect with iOS devices

For the iOS device, to search and register MFP nearby into the PageScope Mobile (PSM)*3 via Bluetooth LE (BLE)*4 technology. Additionally, iOS devices can be used to log-into MFP through BLE connection. Select files on the PSM to print*5 directly from iOS devices or scan*5 files directly to the iOS devices.

*3 PageScope Mobile for iPhone/iPad version 5.0 or higher is required.

*4 Optional Device Connection I/F Kit EK-609 is required.

*5 Wireless LAN environment is required to perform print and scan.

Wireless LAN (AP mode) support

The MFP becomes a wireless LAN Access Point*6 to allow direct wireless connection between mobile devices and bizhub. Devices brought into the office will be able to directly connect with bizhub and are securely separated from existing company LANs. PageScope Mobile will enable more convenient use, as wireless set up can be completed between a mobile device and bizhub simply by reading the QR code that is displayed on the machine panel.

*6 Optional Upgrade Kit UK-212 and Device Connection I/F Kit EK-608 or EK-609 are required.

QR code display screen



Wireless LAN (AP mode) connection image



* In AP mode (base unit), simultaneous connections can be made with up to 5 devices.

Standard web browser

The multi-touch UI in the operational panel can be used to display and print out web page contents. It is convenient for print required portions of PDF files that can be viewed on websites, or to print maps for places you are about to visit.

To connect instantly without print drivers to the industry standard mobile technologies

AirPrint

Apple's standard printing system compatible with iOS 4.2 and Mac OS 10.7 or later. A compatible printer on your wireless LAN can be used.



Konica Minolta Print Service

Print directly to bizhub via a wireless LAN from Android 4.4 or later installed devices.



Mopria Print Service

Wireless printing technology provided by Mopria Alliance. Allows you to print from devices installed with Android 4.4 or later.



PageScope Mobile

A genuine mobile print application offered by Konica Minolta. To allow usage of wide range of bizhub functions such as duplex print, security print, staple and punch.



Google Cloud Print

With the compatible software installed, you can print from any locations via the internet regardless OS or device types.



* Google Cloud Print Setup and Google account registration are required.

* Optional Upgrade Kit UK-211 is required.



Flexible and advanced security features to protect valuable information

Authentication on the MFP main unit

Authentication can be performed directly on the main unit. Detailed access control can be set up for each function including copy, print, scan, and fax*1.

*1 FAX feature requires optional FAX Kit FK-513 and HDD will be needed if MFP does not equip the HDD as standard.

IC card authentication

To authenticate*2 with various types of IC card*3. The authentication method also complies with SSFC (Shared Security Formats Cooperation) standard. Besides the IC card, authentication can also be performed with any Android devices*4 that equipped NFC antenna.



*2 Optional Authentication Unit AU-201S and Device Connection I/F Kit EK-608 or EK-609 are required.

*3 Compliant non-contact IC cards include FeliCa (IDm), SSFC, FCF, FCF (campus), FeliCa Private, and MIFARE (UID).

*4 Requires Android 4.4 or later that supports HCE (Host Card Emulation) or PageScope Mobile for Android v4.1 or later.

Biometric authentication

Your finger veins becomes the most accurate authentication tool. The biometric authentication is easy to implement but offer very high-level security.



* Optional Biometric Authentication Unit AU-102, Working Table WT-506 and Device Connection I/F Kit EK-608 or EK-609 are required.

TPM (Trusted Platform Module)

Control the confidential information with a TPM (Trusted Platform Module) security chip which encrypts and decrypts any confidential data. The confidential information will be encrypted and stored only in the dedicated storage area in the chip. To avoid unauthorised reading from the outside.

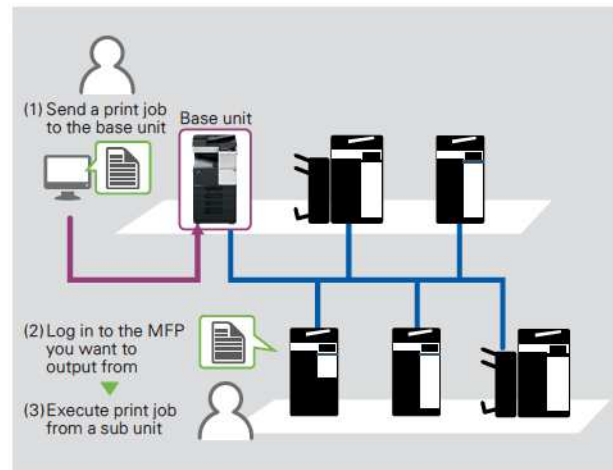
* Optional i-Option LK-115 v2 is required.

Server-less pull printing

Print jobs sent by user can be printed from any MFP in the office print group. To allows user to build a server-less pull printing system easier and with low introduction cost.

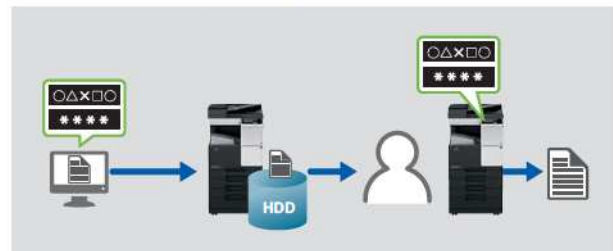
* A pull printing system consisting of a maximum of 10 MFPs can be created. It is necessary that all corresponding MFPs be in the same network.

* Optional i-Option LK-114 and Upgrade Kit UK-211 are required to be installed to each of the MFP.



ID & Print

If user set a password in the printer driver screen before execute the print, the print data will be stored in the HDD of the MFP and will not be printed at MFP until the same password is entered on the MFP operation panel. This function is useful when printing confidential documents or to restrict the receipt of outputs only to specific user.



Screen display enlarge and colour reversal functions

The screen display enlarge function to enlarge the text on the buttons. The screen display colour reversal function to reverses the display colour while maintaining the same contrast ratio. For better visibility to help elderly users and users with low vision.



Detachable paper cassette

Paper cassette of the MFP is detachable. Jammed paper remained inside of the MFP can be easily remove. To reduce MFP downtime.



Environmental contribution is always the top priority

Usage of the recycled materials

Recycled PC/ABS and biomass plastic have been used in the MFP body. The recycled material usage is approximately 11% of total MFP weight ratio*1 and approximately 51% of the MFP main body are made by the recycled materials.

*1 Total weight ratio of resins and plastics used in this machine.



Top class power consumption and TEC value in its class

The MFP CPU power set to turned off during the sleep mode. This results the top class 0.5 W power consumption ratio (during the sleep mode). The TEC value has also been reduced approximately 32-55%. More CO₂ emissions from MFP can be reduced.

* Values for 220-230 V
* TEC values applied to the International Energy Star Program Version 2.0

Yearly CO₂ emissions:
TEC value x 52 weeks x emission factor
(From the November, 2011 press release by Japan's Ministry of the Environment.)



13025 - 156 Street Edmonton, Alberta T5V 0A2
Phone: 780-490-5600 Fax: 780-490-7727
www.cbsca.com



Model shown is 367 with options.

bizhub 367/287/227

367 B&W 36 ppm	287 B&W 28 ppm	227 B&W 22 ppm	Scan 45 opm Simplex	Biometric Authentication	IC-Card Authentication	Emperon Direct
USB Print	Colour Internet Fax	Fax	Mobile Support	Bioplastic	Recycled PC/ABS	Simitri with Biomass

*1 Optional

Product appearance, configuration and/or specifications are subject to change without notice. This product is not available for some countries or regions.

KONICA MINOLTA, the KONICA MINOLTA logo and symbol mark, "Giving Shape to Ideas", bizhub, bizhub PRO, bizhub PRESS, magicolor, PagePro, PageScope, Simitri, Simitri HD, Simitri HD+, Simitri with Biomass, Emperon, S.E.A.D., S.E.A.D.II, Printgroove and Konica Minolta Optimised Print Services and their respective logos are registered trademarks or trademarks of KONICA MINOLTA, INC. Evernote is a registered trademark or trademark of Evernote Corporation. Google is a trademark or registered trademark of Google Inc. in the U.S. and other countries. SharePoint is a registered trademark or trademark of Microsoft Corporation in the U.S. and other countries. All other brands and product names are registered trademarks or trademarks of their respective companies or organisations.

KONICA MINOLTA, INC.
2-7-2 Marunouchi Chiyoda-ku, Tokyo, Japan
http://www.biz.konicaminolta.com

Ecology & Environment

KONICA MINOLTA products are designed with the environment in mind.

- Energy Star
- RoHS Compliance
- WEEE Compliance
- Eco-friendly Toners
- Production at ISO Certified Factories



Requirements for safe use

- Please read and follow the instruction manual to ensure safe operation.
- Only operate using appropriate power supply and voltage.
- Connecting the earth wire to an inappropriate place may cause explosion or electric shock. Please connect accordingly (Taiwan and the Philippines only).

mfp



bizhub 227

MONOCHROME MID-VOLUME MULTIFUNCTION PRINTER

bizhub 227

As easy as a familiar tablet, the enhanced touch-and-swipe interface of the bizhub 227 helps make you more productive – with 22 ppm output in high-resolution B&W, scanning in color or B&W at up to 45 originals per minute, 3,600-sheet maximum paper capacity and economical, high-value performance.

System Overview

System memory	4 GB
System hard disk	250 GB
Interface	10-BASE-T/100-BASE-TX/1,000-BASE-T Ethernet, USB 2.0
Network protocols	TCP/IP (IPv4/IPv6), SMB, LPD, IPP, SNMP, HTTP, HTTPS
Frame types	Ethernet 802.2, Ethernet 802.3, Ethernet II, Ethernet SNAP
Reversing automatic document feeder (optional)	Up to 100 originals / 5.5" x 8.5" to 11" x 17" / 50-128 gsm
Printable paper size	Scanning/Copying: up to 11" x 17" Printing: up to 11" x 17" Custom paper sizes
Printable paper weight	60-220 gsm
Paper input capacity	Standard: 1,100 sheets / Max.: 3,600 sheets
Tray 1	500 sheets / 5.5" x 8.5" to 8.5" x 14" / 60-220 gsm
Tray 2	500 sheets / 5.5" x 8.5" to 11" x 17" / 60-220 gsm
Tray 3 (optional)	500 sheets / 5.5" x 8.5" to 11" x 17" / 60-220 gsm
Tray 4 (optional)	2 x 500 sheets / 5.5" x 8.5" to 8.5" x 11" / 60-220 gsm
Large capacity tray PC-413 (optional)	2,500 sheets / 8.5" x 11" / 60-220 gsm
Manual bypass	100 sheets / 4" x 6" to 11" x 17" / custom paper sizes / 60-220 gsm
Automatic duplexing	5.5" x 8.5" to 11" x 17" / 60-220 gsm
Finishing modes	Offset, group, sort, punch, half-fold, tri-fold, booklet
Output capacity	Max. with finisher: 3,300 sheets Max. without finisher: 250 sheets
Stapling (optional)	Max.: 50 sheets or 48 sheets + 1 cover sheet (up to 209 gsm)
Stapling output capacity	Max.: 1,000 sheets
Tri-fold (optional)	Up to 3 sheets
Tri-fold capacity	Max.: 30 sheets (tray)
Booklet (optional)	Max.: 20 sheets or 19 sheets + 1 cover sheet (up to 209 gsm)
Booklet output capacity	Max.: 100 sheets (tray)
Copy/print volume	Max.: 100,000 pages/month ¹
Toner lifetime	23,000 pages
Imaging unit lifetime	85,000 pages / 590,000 pages (Drum / Developer)
Power consumption	120 V / 50/60 Hz, less than 1.5 kW (system)
System dimensions	23.0" x 26.0" x 28.9" (W x D x H)
System weight	Approx. 124.6 lb

Copier Specifications

Copying process	Electrostatic laser copy, tandem
Toner system	Simitri® HD Polymerized Toner
Print speed (8.5" x 11")	Up to 22 ppm (Portrait)
Print speed (11" x 17")	Up to 14 ppm
Auto-duplex speed (8.5" x 11")	Up to 22 ppm (Portrait)
1st copy out time	5.3 sec.
Warm-up time	Approx. 15 sec. ²
Copy resolution	600 x 600 dpi
Gradations	256 gradations
Multi-copy	1-9,999
Original format	Up to 11" x 17"
Magnification	25-400% in 0.1% steps, auto zooming
Copy functions	Electronic sorting, multi-job, adjustments (contrast, sharpness, image density), proof copy, interrupt mode, color mode, separate scan, sort/group, combination, original selection, ID card copy, 2-in-1, 4-in-1

Printer Specifications

Print resolution	1,800 (equivalent) x 600 dpi
PDL	PCL6 (XL 3.0), PCL5c, PostScript 3 (ver. 3016), XPS
Operating systems	Windows (x32/x64): XP / Vista / 7 / 8 Windows Server (x32/x64): 2003 / 2008 / 2008 R2 ³ / 2012 ³ Macintosh OS X 10.2.8 or later UNIX / Linux / Citrix
Printer fonts	80 PCL Latin, 137 PostScript 3
Print functions	Direct Print of PCL, PS, TIFF, XPS, PDF, encrypted PDF files and OOXML (DOCX, XLSX, PPTX), mixmedia and mixplex, "Easy Set" job programming, overlay, watermark, copy protection, carbon copy print

Scanner Specifications

Scan speed	B&W / Color: up to 45 ipm
Scan resolution	Max.: 600 x 600 dpi
Scan modes	Scan-to-Email, Scan-to-SMB, Scan-to-FTP, Scan-to-Box, Scan-to-USB, Scan-to-WebDAV, Scan-to-DPWS, Network TWAIN scan
File formats	JPEG, TIFF, PDF, PDF/A 1a and 1b (optional), compact PDF, encrypted PDF and searchable PDF (optional), XPS, compact XPS, PPTX and searchable PPTX (optional), searchable DOCX/XLSX (optional)
Scan destinations	2,100 (shared with fax), LDAP support
Scan functions	Annotation (text/time/date) for PDF, up to 400 job programs, realtime scan preview

Fax Specifications

Fax	Super G3 (optional)
Transmission	Analog, i-Fax, Color i-Fax, IP-Fax
Resolution	Max.: 600 x 600 dpi (ultra-fine)
Compression	MH, MR, MMR, JBIG
Modem	Up to 33.6 Kbps
Destinations	2,100 (single + group)
Functions	Polling, time shift, PC-fax, receipt to confidential box, receipt to Email/FTP/SMB, up to 400 job programs

User Box Specifications

Storable documents	Max.: 3,000 documents or 10,000 pages
Type of user boxes	Public Personal (with password or authentication) Group (with authentication)
Type of system boxes	Secure print, encrypted PDF, fax receipt, fax polling, annotation
User box functionality	Reprint, combination, download, sending (Email/FTP/SMB and fax), copy box-to-box

System Features

Security	ISO 15408 EAL IEEE 2600.1 IP filtering and port blocking SSL2, SSL3 and TSL1.0 network communication IPsec support IEEE 802.1x support User authentication Authentication log Secure print Hard disk overwrite (8 standard types) Hard disk data encryption (AES 128) Memory data auto deletion Confidential fax reception Print user data encryption Copy protection (Copy Guard, Password Copy) optional
Accounting	Up to 1,000 user accounts Active Directory support (user name + password + Email folder) User function access definition Optional Biometric authentication (finger vein scanner) Optional ID card authentication (ID card reader)
Software	PageScope Net Care Device Manager PageScope Data Administrator PageScope Box Operator Print Status Notifier Driver Packaging Utility Log Management Utility

¹ Maximum monthly duty cycle describes the maximum number of pages a device can output on a monthly basis.
This specification is a guideline intended to offer a comparison of durability as it relates to the entire Konica Minolta MFP and printer product line so that the appropriate device can be placed in order to meet customer needs.

² Warm-up time may vary depending on the operating environment and usage

³ Supports x64 only

Components and Options

AU-102 Biometric authentication	Finger vein scanner
AU-205H Universal ID card reader	Various ID card technologies
EK-608 USB I/F kit	USB keyboard connection
EK-609 USB I/F kit	USB keyboard connection, Bluetooth
DF-628 Document feeder	Reversing automatic document feeder, capacity 100 originals
DK-513 Copier desk	Provides storage space for print media and other materials
FK-513 Fax board	Super G3 fax, digital fax functionality
FS-533 Staple finisher	50-sheet stapling, 500 sheets max. output (requires MK-602)
FS-534 Staple finisher	50-sheet stapling, 3,300 sheets max. output (requires RU-514)
FS-534 + SD-511 Booklet finisher	50-sheet staple finisher, 20-sheet booklet finisher, 3,300 sheets max. output (requires RU-514)
JS-506 Job separator	Separation for fax output, etc.
KH-102 Keyboard holder	To place USB keyboard
KP-101 10-Key pad	For use instead of touchscreen
LK-102 v3 PDF enhancements	PDF/A, PDF encryption, digital signature
LK-104 v3 Voice guidance	Provides voice guidance functions
LK-105 v4 OCR text recognition	Searchable PDF
LK-106 Barcode fonts	Supports native barcode printing
LK-107 Unicode fonts	Supports native Unicode printing
LK-108 OCR A and B fonts	Supports native OCR A and B font printing
LK-110 v2 Enhanced image support	Generates various file formats incl. DOCX, XLSX and combines LK-102 (encrypted PDF) + LK-105 (searchable PDF/OCR functionality)
LK-111 ThinPrint Client	Print data compression for reduced network impact
LK-114 Universal print function	Supports server-less ubiquitous printing
MK-602 Mount kit	Installation kit required for FS-533
MK-735 Mount kit	Installation kit for ID card reader
OC-514 Original cover	Cover instead of auto document feeder
PC-113 Universal tray (x1)	5.5" x 8.5" to 11" x 17", 500 sheets, 60-220 gsm
PC-213 Universal tray (x2)	5.5" x 8.5" to 11" x 17", 2 x 500 sheets, 60-220 gsm
PC-413 Large capacity tray	8.5" x 11", 2,500 sheets, 60-220 gsm
PK-519 Punch kit for FS-533	2/3-hole punching, autoswitching
PK-520 Punch kit for FS-534	2/3-hole punching, autoswitching
RU-514 Relay unit	Required for installation of FS-534
UK-212 Wireless LAN	Wireless LAN to network connector
WT-506 Working table	Authentication device placement

Note: Not all options may be available at time of launch.



13025 - 156 Street Edmonton, Alberta T5V 0A2
Phone: 780-490-5600 Fax: 780-490-7727
www.cbsca.com

